
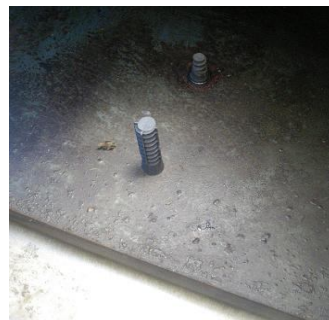



## BOLT- CAST IN SOCKET SYSTEMS

| Code      | Type   |  | Dimension |     | Purpose  |         |       |      | Property   |
|-----------|--------|---|-----------|-----|----------|---------|-------|------|--|
|           |        |   | $\phi$    | L   | Assembly | Railway | Track | Hang |  |
| TT 16/135 | Nicked |   | 16        | 135 | e        |         |       | x    | Special design. Rapid fixing and screwing. Fast thread. Easy to use, light and economical. |
| TT 20/135 |        |   | 20        | 135 | e        | e       | e     | x    |  |
| TT 24/135 |        |   | 24        | 135 | e        | e       |       | x    |  |



# ELBE TRADE

*Simple is the best*

| Code      | Type        |  | Dimension |     | Purpose  |         |       | Property  |
|-----------|-------------|---|-----------|-----|----------|---------|-------|---|
|           |             |   | $\phi$    | L   | Assembly | Railway | Track |   |
| AS 16/110 | Thread - in |   | 16        | 110 | e        |         |       | Strong fitting between socket and bolt thread. Special conical inside which squeeze more as turning. Resistance to vibration. |
| AS 20/140 |             |   | 20        | 140 | e        |         |       |   |
| AS 24/140 |             |   | 24        | 140 | e        |         |       |   |

